



Kyoto Station

京都車站

Revised on Sep. 5, 2015
2015年9月5日修訂

Hachijo Gate 八條口

Approx. **30 minutes**
約30分輕鬆到達

World Heritage 世界遺產

醍醐寺

Daigo-ji Temple

Yamashina Express Bus offers direct access to Daigo-ji Temple, which is well known for its beautiful cherry blossoms and fall foliage.

使用山科急行，無須轉車即可到達櫻花、紅葉的名勝地「醍醐寺」，既方便又優惠。

Five-story pagoda
五重塔



Bentendo
弁天堂



Departs from right next to Hotel Keihan Kyoto!
Please find the bus with this design.

從飯店京阪京都(橫)出發! 這種設計的公車是指標。



Sanboin
三寶院



Adult: 300 yen Child: 150 yen
大人:300日圓 兒童:150日圓

Yamashina Express Bus Information 關於山科急行線的指南、須知事項

- Please pay the exact fare in the fare box when you get off the bus. Please place the fare in cash. No change can be given so use the coin changer to obtain small change if necessary. (10,000 yen, 5000 yen, and 2000 yen notes cannot be used.)
- Up to 2 toddlers ride free with each accompanying adult or child.
- No smoking throughout the whole bus. Please refrain from using cell phones on board.
- 車費請在下車時投入車費箱中。另外，本車無法找零，使用現金付款時，請先使用兌換機進行兌換，然後再付款。(兌換機無法兌換1萬日圓紙幣、5千日圓紙幣、2千日圓紙幣。)
- 大人或者兒童每人可免費帶2名幼兒同伴。
- 車內全部禁煙。另外，車內請不要使用手機。

Timetable 時刻表

Delays in the schedule may occur due to traffic conditions. For Daigo-ji Temple, please get off at the Daigo-ji Temple or Daigo-ji mae" Bus Stop.

根據路況，有時可能會晚到。去醍醐寺請在「醍醐寺」或者「醍醐寺前」停靠站下車。

Weekday 平日

Kyoto Sta.-Hachijoguchi 京都站八條口	⇨	Daigo-ji Temple 醍醐寺	Daigo-ji Temple 醍醐寺	Daigo-ji mae 醍醐寺前	⇨	Kyoto Sta.-Hachijoguchi 京都站八條口
7:45		8:15	8:53	8:54		9:20
8:30		9:00	9:18	9:19		9:45
9:00		9:30	9:58	9:59		10:25
9:25		9:55	10:38	10:39		11:05
9:50		10:20	11:58	11:59		12:25
11:10	⇨	11:40	13:18	13:19	⇨	13:45
12:30		13:00	13:58	13:59		14:25
13:10		13:40	15:18	15:19		15:45
14:30		15:00	15:58	15:59		16:25
15:10		15:40	17:17	17:18		17:45
			17:47	17:48		18:15
			18:43	18:44		19:10

*The bus stop in the way is omitted. *在途中有的車站省却。

Saturday and holidays 星期六·假日

Kyoto Sta.-Hachijoguchi 京都站八條口	⇨	Daigo-ji Temple 醍醐寺	Daigo-ji Temple 醍醐寺	Daigo-ji mae 醍醐寺前	⇨	Kyoto Sta.-Hachijoguchi 京都站八條口
7:50		8:18	9:18	9:19		9:45
8:30		9:00	9:58	9:59		10:25
9:10		9:40	10:38	10:39		11:05
9:50		10:20	11:18	11:19		11:45
10:30		11:00	11:58	11:59		12:25
11:10		11:40	12:38	12:39		13:05
11:50	⇨	12:20	13:18	13:19	⇨	13:45
12:30		13:00	13:58	13:59		14:25
13:10		13:40	14:38	14:39		15:05
13:50		14:20	15:18	15:19		15:45
14:30		15:00	16:08	16:09		16:35
15:10		15:40	16:48	16:49		17:15
15:50		16:20	17:27	17:28		17:55
			18:07	18:08		18:35
			18:48	18:49		19:15

*The bus stop in the way is omitted. *在途中有的車站省却。

Travel Tickets and Cards 關於車票

The following travel tickets and cards are accepted on this service. 可以使用

- Keihan Bus 1-Day Ticket (Kyoto/Otsu Version)
京阪公車一日乘車券【京都·大阪版】

Available at the Keihan Bus Information Center at the Hachijo Gate of Kyoto Station
在京阪公車京都站八條口觀光指南處販售中

- Kyoto Sightseeing 1-Day Ticket (Yamashina/Daigo Version)
京都觀光一日乘車券【山科·醍醐擴大版】

Available at the Keihan Bus Information Center at the Hachijo Gate of Kyoto Station
在京阪公車京都站八條口觀光指南處販售中

- KANSAI THRU PASS

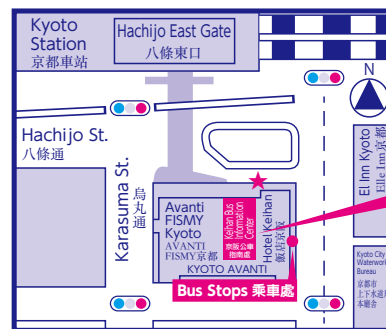
The following travel tickets and cards are not accepted on this service. 不能使用

- Keihan Bus 1-Day Ticket (Osaka Version)
京阪公車一日乘車券【大阪版】

- Kyoto City Bus 1-Day Ticket
市公車一日乘車券

Bus Stop Location Map 乘車指南圖

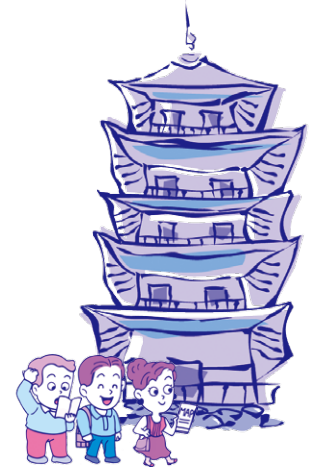
JR, Kintetsu, Subway (JR·近鐵·地鐵)
Kyoto Sta.-Hachijoguchi 京都車站八條口



Kyoto Sta.-Hachijoguchi
京都車站八條口
(Information Center/Waiting Area)
(指南處·候車處)

- ★ Bus stops for Keihan Express Bus, Kansai Airport Limousine Bus, and Kyoto sightseeing Bus
- ★ 京阪高速巴士、關空利木津巴士、京都定期觀光巴士 乘車處

Daigo-ji Temple



Daigo-ji Temple Opening Hours 醍醐寺參拜時間

From March 1 to the 1st Sunday in December
3月~12月的第一個星期天為止的期間

9:00 am to 5:00 pm
上午9點~下午5點

From the following Monday of the 1st Sunday
in December to the end of February
12月的第一個星期天的隔天~2月底為止的期間

9:00 am to 4:00 pm
上午9點~下午4點

*Entrance closed 30 minutes before closing time *當日最後受理時間為關門前30分鐘